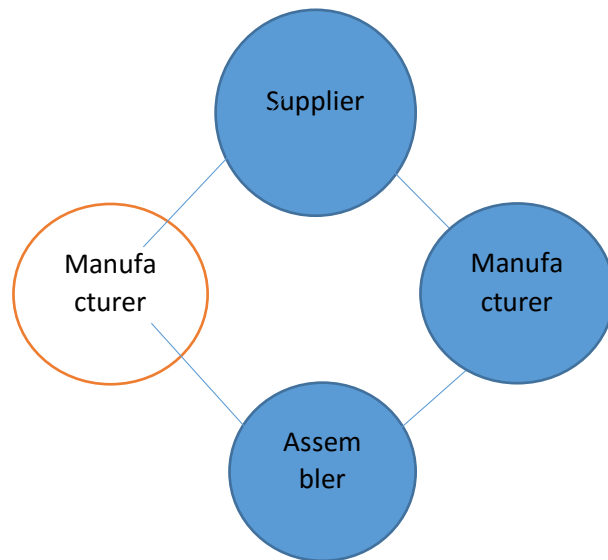


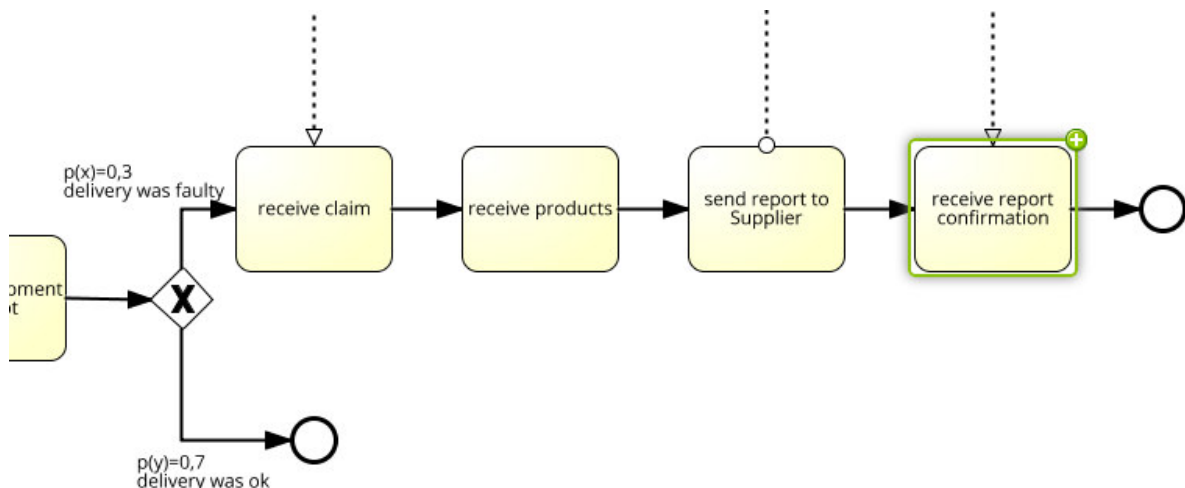
These four plays are set up like in the following graphic and act independently.



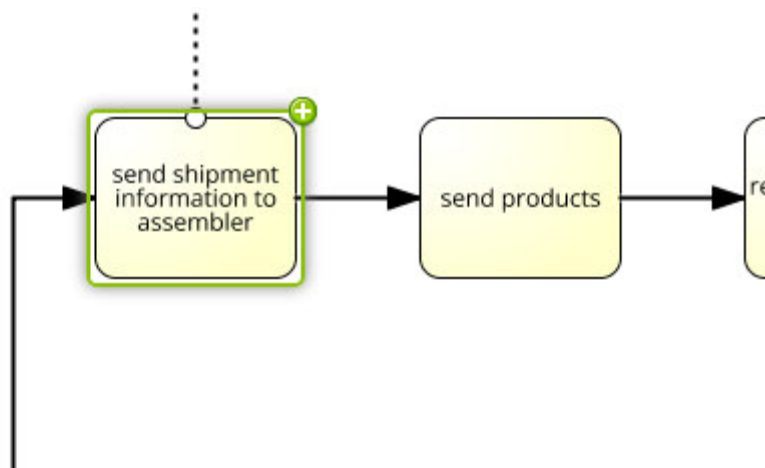
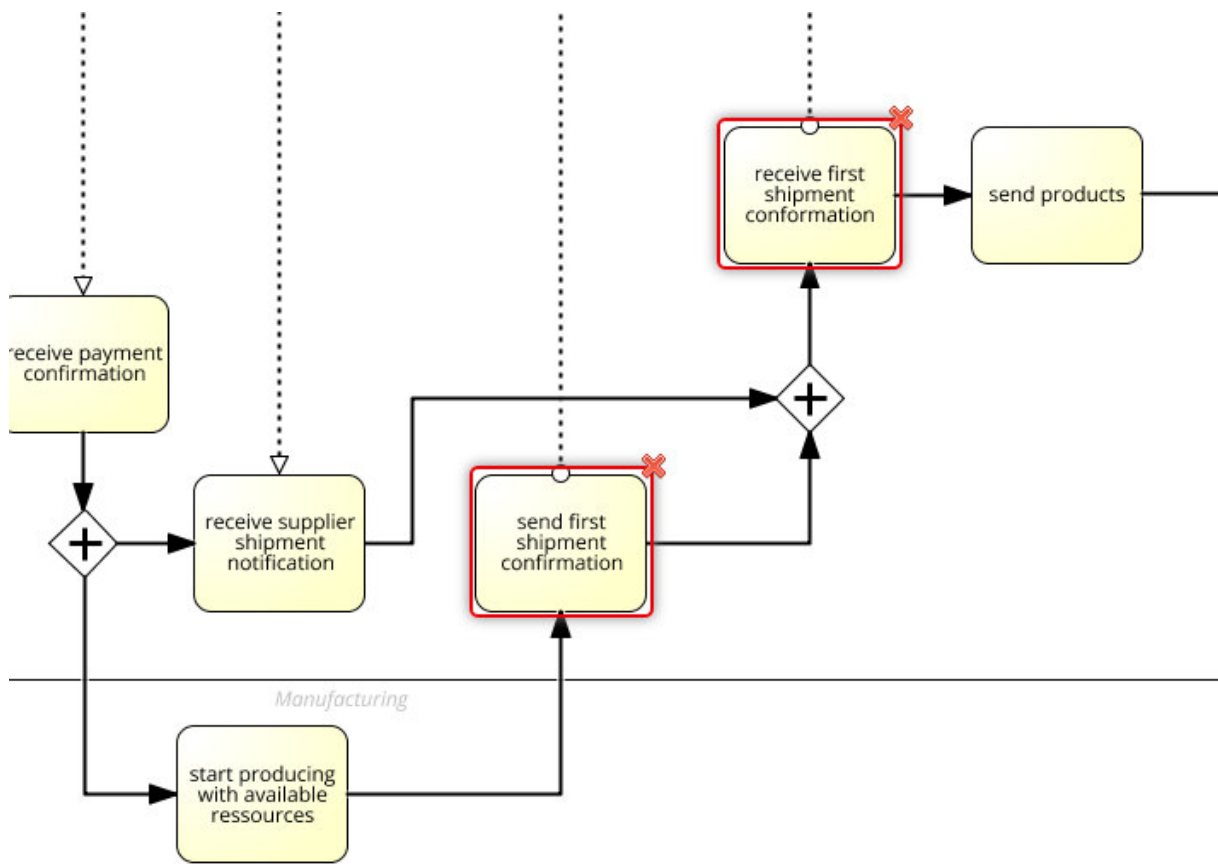
1. Creating three scenarios

So my role is dependent on two partners and also and influences them. For my three scenarios I created a private model, a public model and a choreography model. All of them can be found at the end of this exercise. My three new scenarios are:

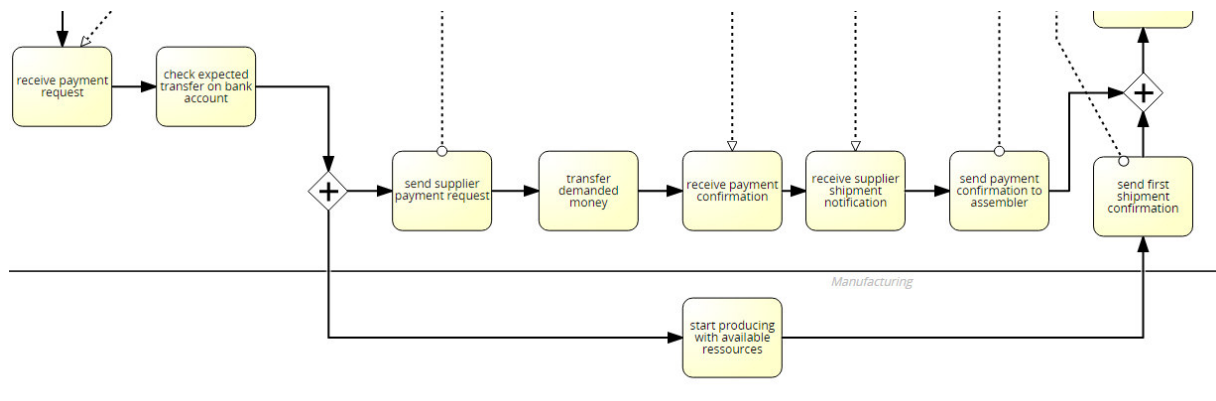
1. *Added a new Task*: receive report confirmation



2. *Replaced two Activities by another*: The Manufacturer stops sending a confirmation for his first shipment as well as receiving the first shipment confirmation from the Supplier. Instead of he sends detailed information about the shipment to the Assembler.



3. *Changed the payment process*: After receiving the payment, the Manufacturer immediately starts with the manufacturing process, instead of waiting for Supplier payment and starting afterwards



2. Receiving my partner's models

As you can see in the first graphic, I have to receive 6 changes, which can influence my processes. For all of these changes I derived the Object Functions for Time, Cost and Reliability for my private and public model, which can be found in the following table. The detailed calculations and reactions to my partner's changes can be found in the included .xlsx file.

influence to my private model

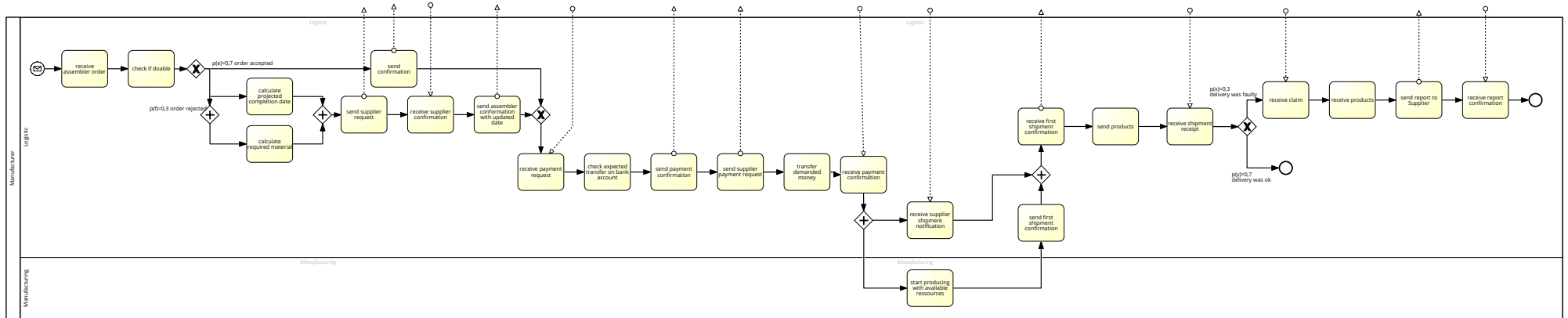
		Ftime	Fcost	Freliability
Assembler	Change I	9,52	€ 687,82	0,007
Assembler	Change II	8,642	€ 656,96	0,015
Assembler	Change III	9,529	€ 728,32	0,004
Supplier	Change I	9,002	€ 678,42	0,011
Supplier	Change II	9,005	€ 687,82	0,007
Supplier	Change III	9,019	€ 678,61	0,009

influence to my public model

		Ftime	Fcost	Freliability
Assembler	Change I	9,519	687,8	0,007
Assembler	Change II	0,249	113,5	0,060
Assembler	Change III	0,279	146,5	0,044
Supplier	Change I	0,249	116,5	0,058
Supplier	Change II	0,255	119,5	0,049
Supplier	Change III	0,269	133,5	0,049

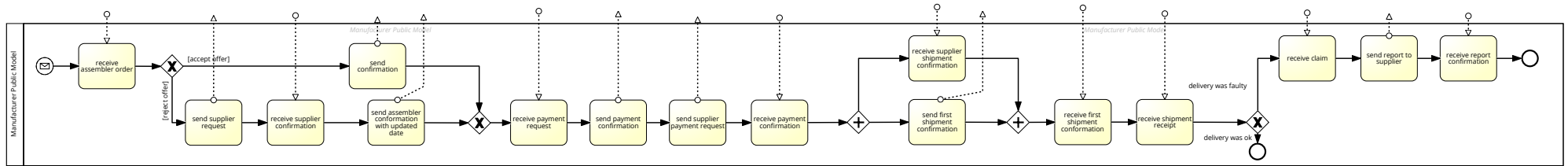
Manufacturer

private_v2_1

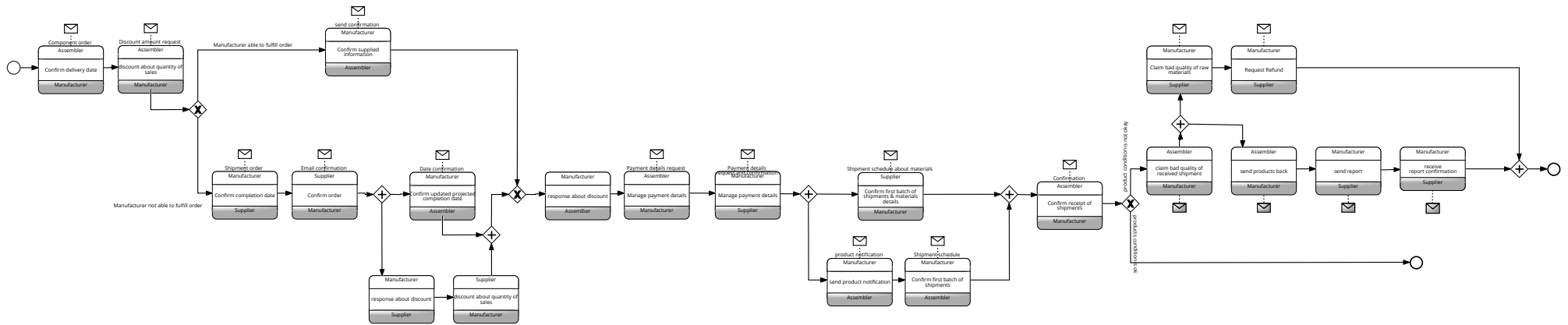


Manufacturer

public_v2_1

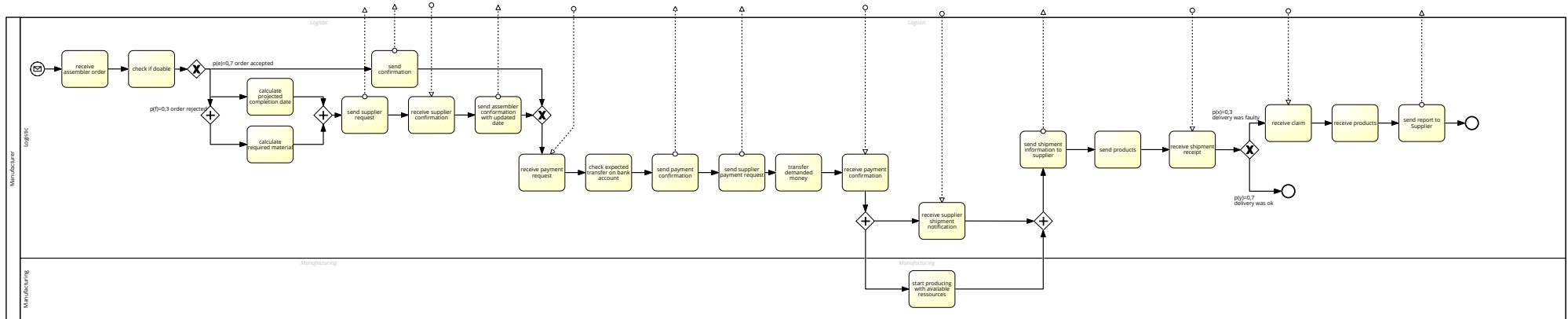


Choreographien_v2_I



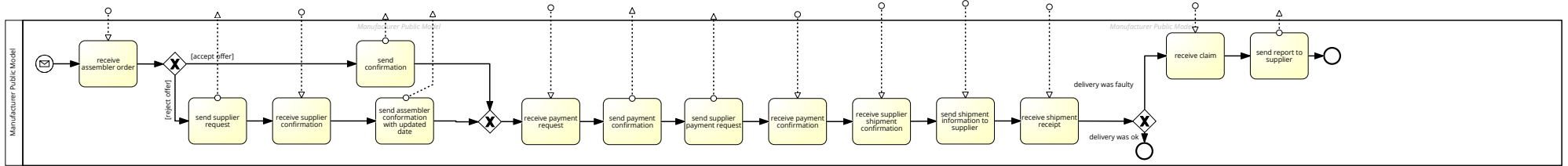
Manufacturer

private_v2_II

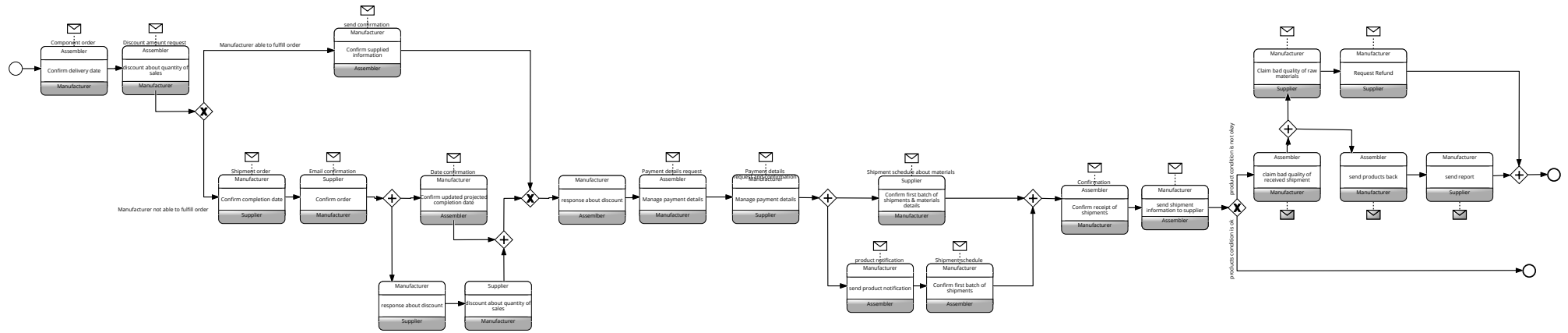


Manufacturer

public_v2_II

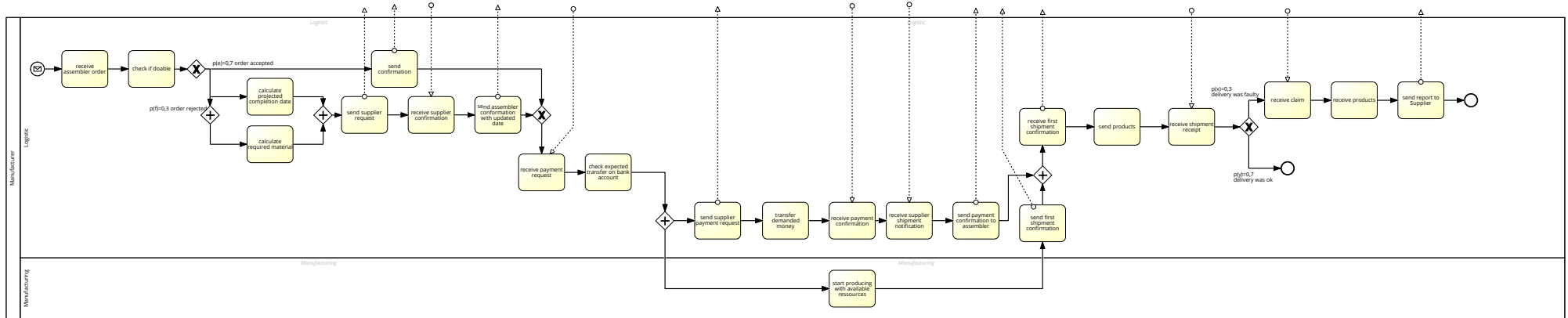


Choreographien_v2_II



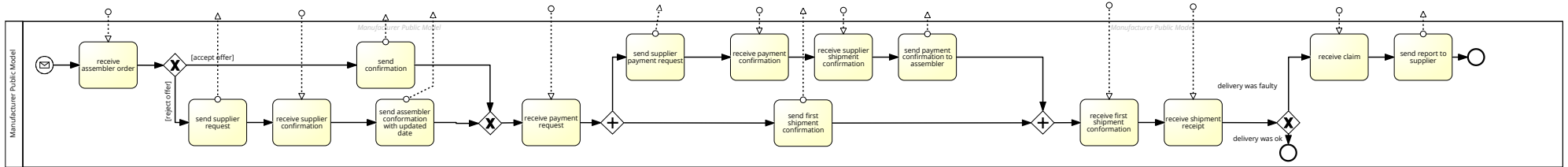
Manufacturer

private_V2_III



Manufacturer

public_v2_III



Choreographien_v2_III

