

The supplier produces and delivers raw material and sends it to the manufacturers. They manufacture the material to products, which are then sent to the Assembler. The Assembler is responsible for merging both intermediate products and building the final product. In our specific case we decided to build our Collaboration Scenario in the sector of car producing. The supplier's raw material is aluminum, which are delivered in two different states. One of our Manufacturer manufactures the vehicle's body and the other one manufactures the engine block. Our global goals (benefits) are:

- improve supply chain (time) of all team members by 5%
- increase productivity, enter new markets in Asia to increase market share
- reduce global costs of all team members by 4%

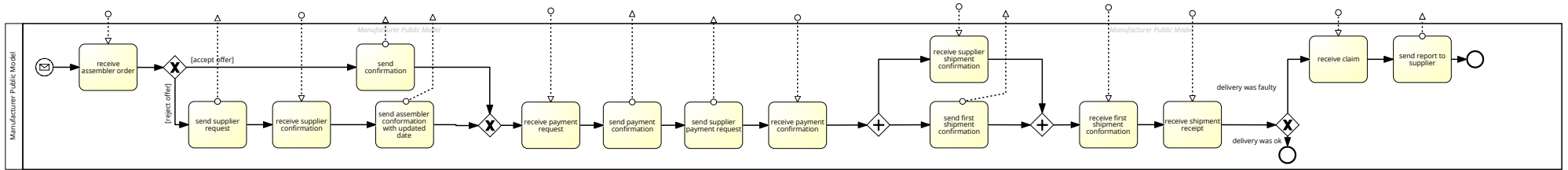
My main Manufacturer goals are:

- reduce producing time by 10%
- reduce administrative costs by 5%

In a group discussion we derived the Choreography Model from the provided text in the exercise paper. The three extended required tasks, which are unique in our solution is a claim process, where the assembler checks the quality of the delivery and then decides to keep it or send it back. We assumed that in case of a bad delivery it's never the manufacturer's fault. So the manufacturer always sends a report to the supplier. With this additional feature we included all of our four roles.

<i>Taskname</i>	Included workers	Cost	Time (hours)	ressource	reliability	Total
<i>receive assembler order</i>	machine	10	0,01	1	0,9	€ 0,11
<i>check if doable</i>	human, machine	20	2	3	0,78	€ 153,85
<i>send confirmation</i>	machine	10	0,01	1	0,8	€ 0,13
<i>calculate projected completion date</i>	human, machine	30	2	2	0,8	€ 150,00
<i>calculate required material</i>	human, machine	30	1	2	0,8	€ 75,00
<i>send supplier request</i>	machine	10	0,01	1	0,8	€ 0,13
<i>receive supplier confirmation</i>	machine	10	0,01	1	0,9	€ 0,11
<i>send assembler conformation with updated date</i>	machine	10	0,01	1	0,9	€ 0,11
<i>receive payment request</i>	machine	10	0,01	1	0,9	€ 0,11
<i>check expected transfer on bank account</i>	human, machine	15	0,5	2	0,7	€ 21,43
<i>send payment confirmation</i>	machine	10	0,01	1	0,9	€ 0,11
<i>send supplier payment request</i>	machine	10	0,01	1	0,9	€ 0,11
<i>transfer demanded money</i>	human, machine	15	0,5	1	0,76	€ 9,87
<i>receive payment confirmation</i>	machine	10	0,01	1	0,9	€ 0,11
<i>receive supplier shipment notification</i>	machine	10	0,01	1	0,9	€ 0,11
<i>start producing with available ressources</i>	human	20	4	4	0,8	€ 400,00
<i>send first shipment confirmation</i>	machine	10	0,01	1	0,9	€ 0,11
<i>receive first shipment conformation</i>	machine	10	0,01	1	0,9	€ 0,11
<i>send products</i>	human	15	1	1	0,8	€ 18,75
<i>receive shipment receipt</i>	machine	10	0,01	1	0,9	€ 0,11
<i>receive claim</i>	machine	10	0,01	1	0,9	€ 0,11
<i>receive products</i>	human	15	0,5	1	0,8	€ 9,38
<i>send report to Supplier</i>	human	15	0,5	1	0,76	€ 9,87
						849,72

Public Model



Private Model

