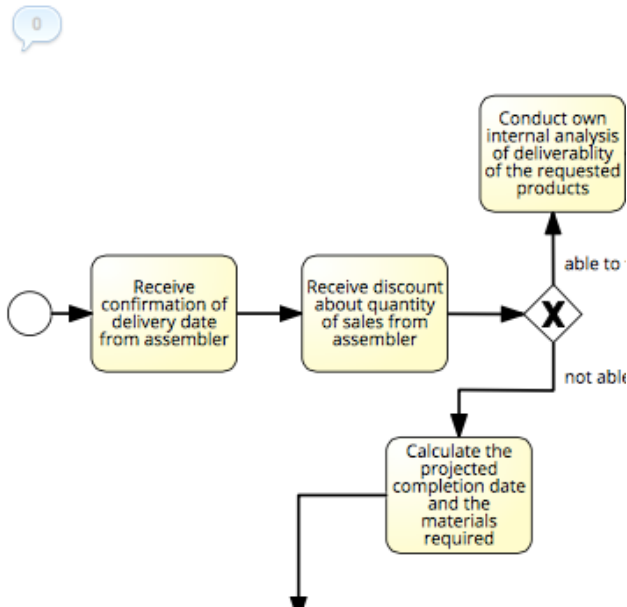
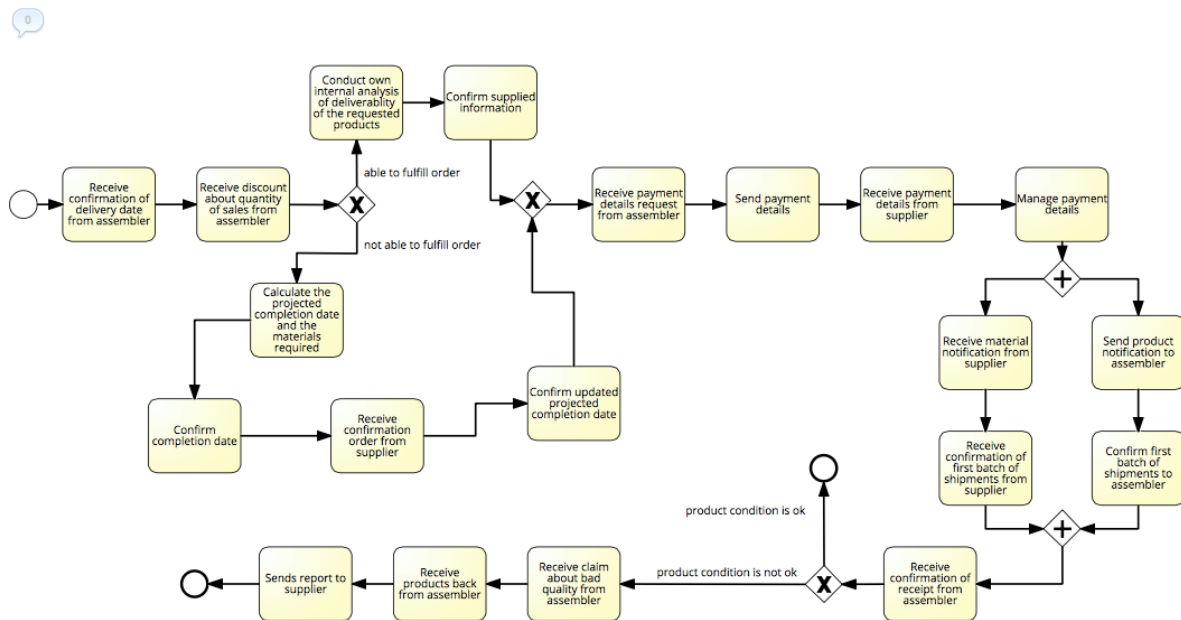


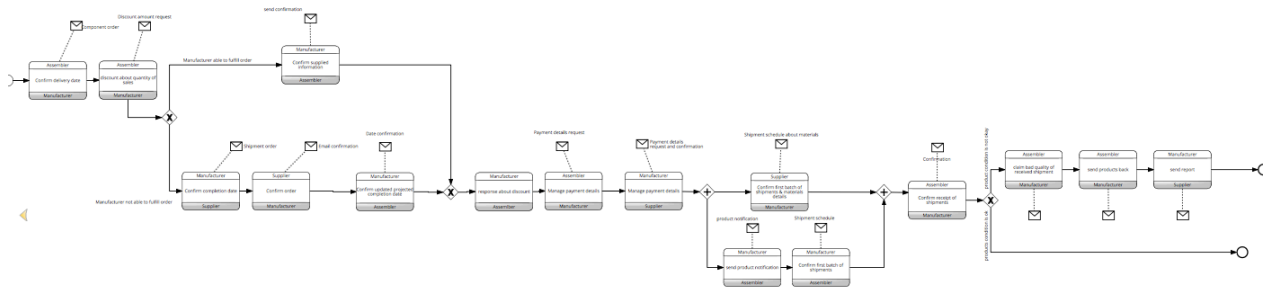
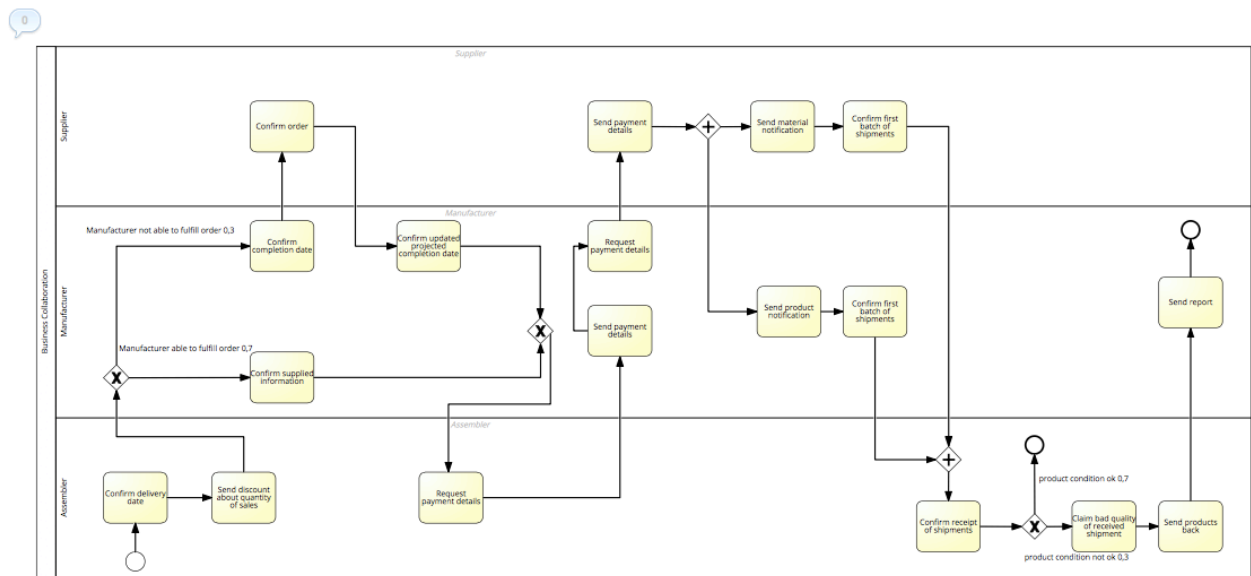
The changes that I made in my private process are the following:

1. I added the task “Receive discount about quantity of sales from assembler”

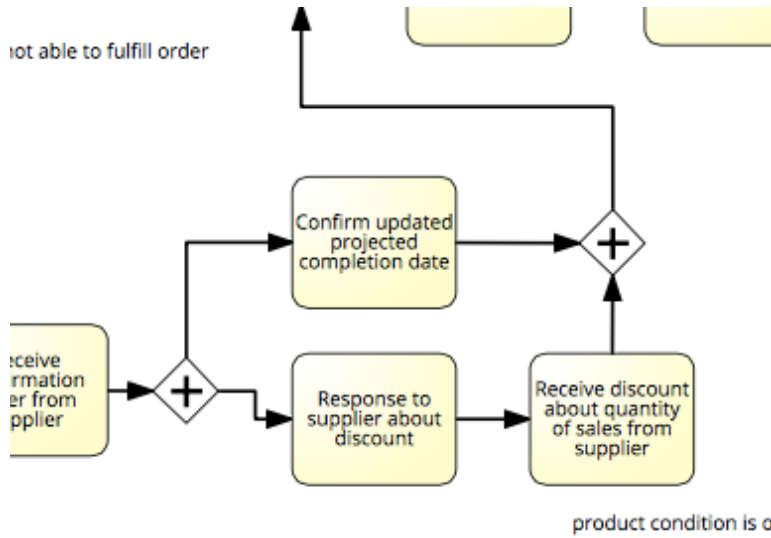


The changes in my public, private and choreography model:

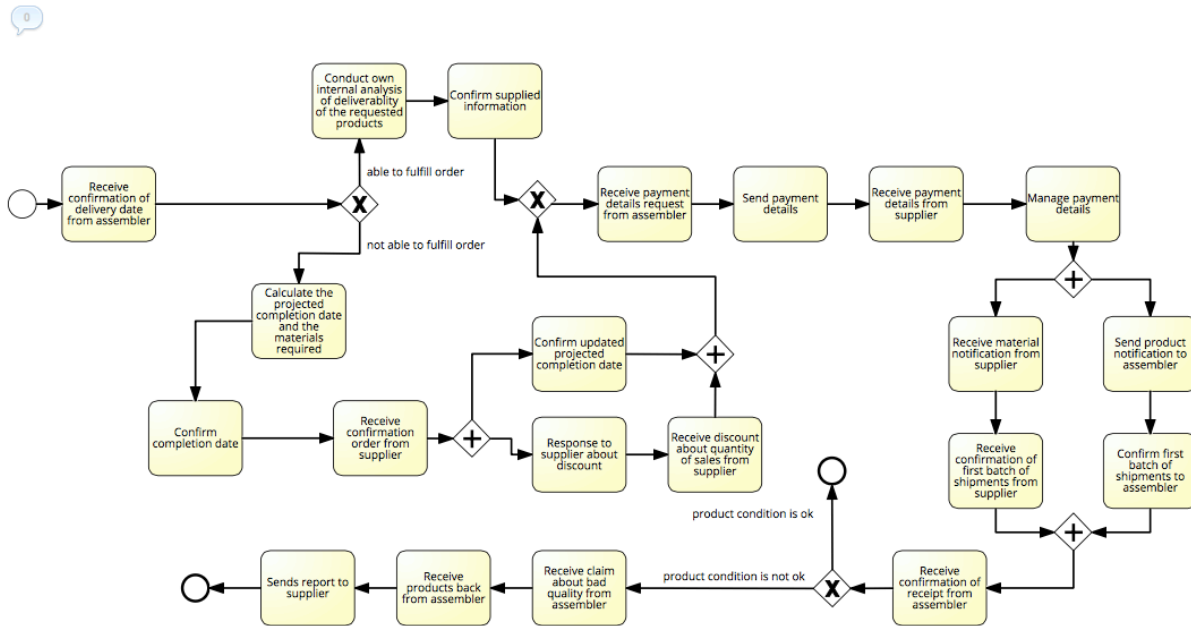


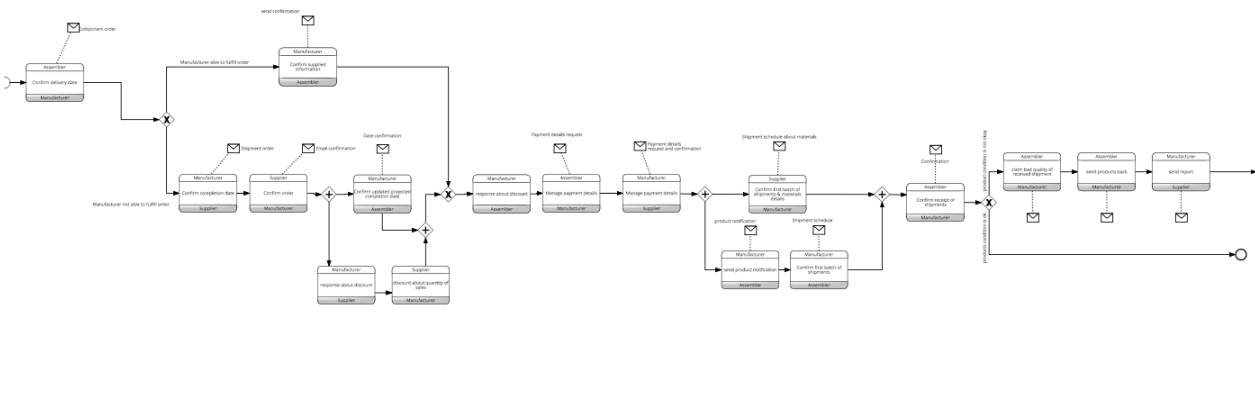
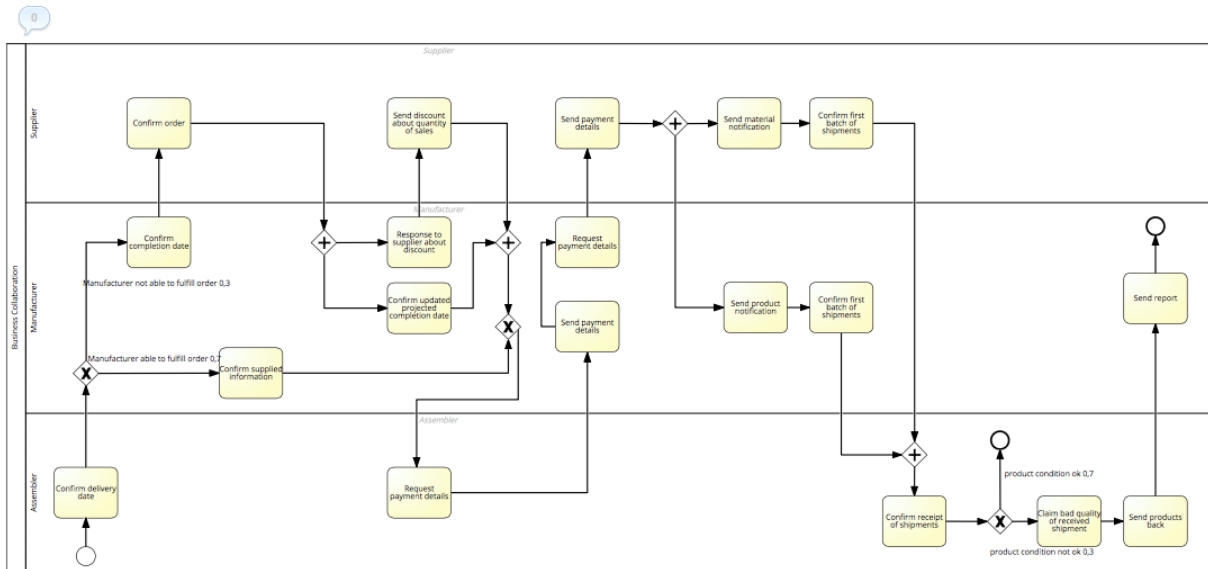


2. I added the following parallelity (Tasks: “Response to supplier about discount” and “Receive discount about...”):

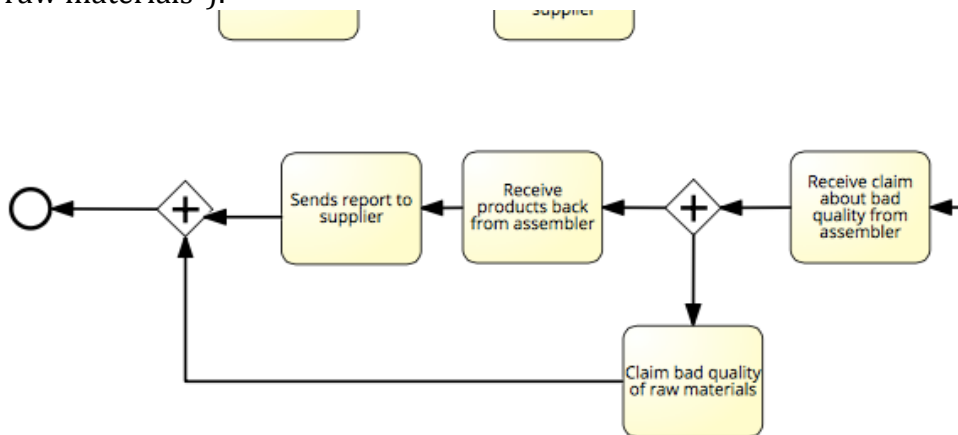


The changes in my public, private and choreography model:

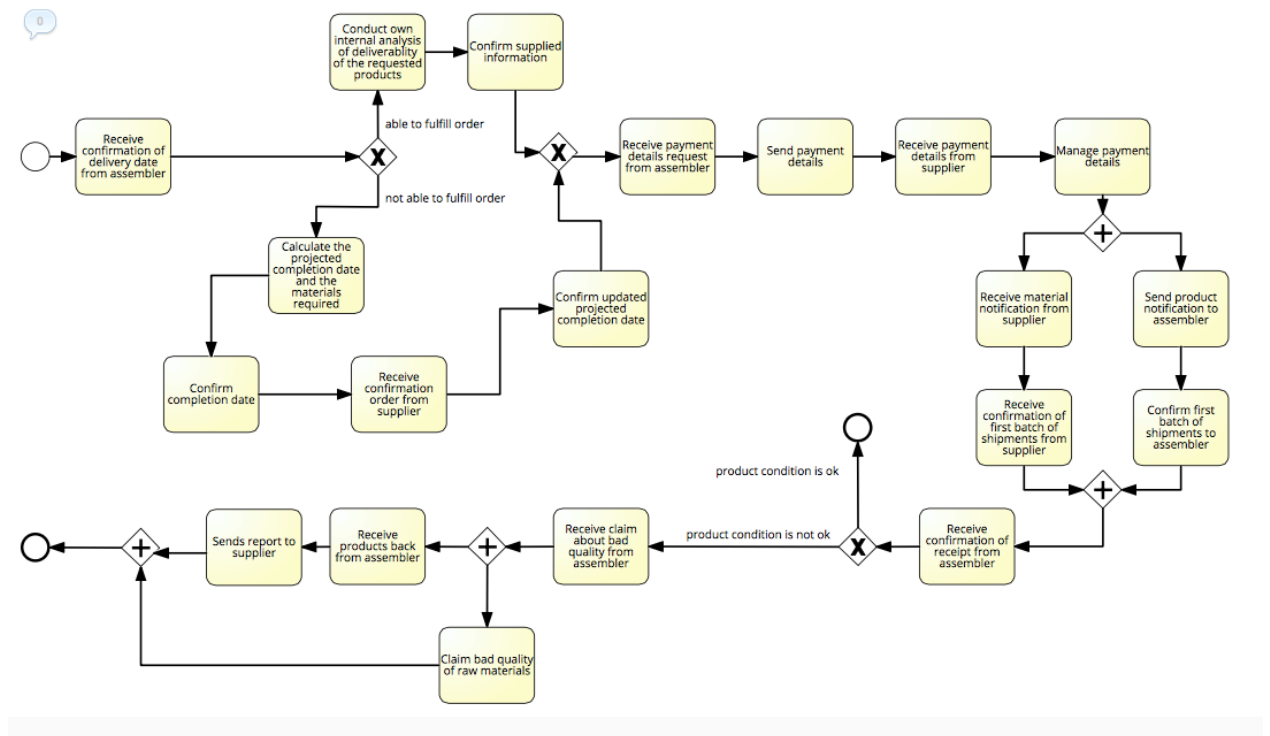


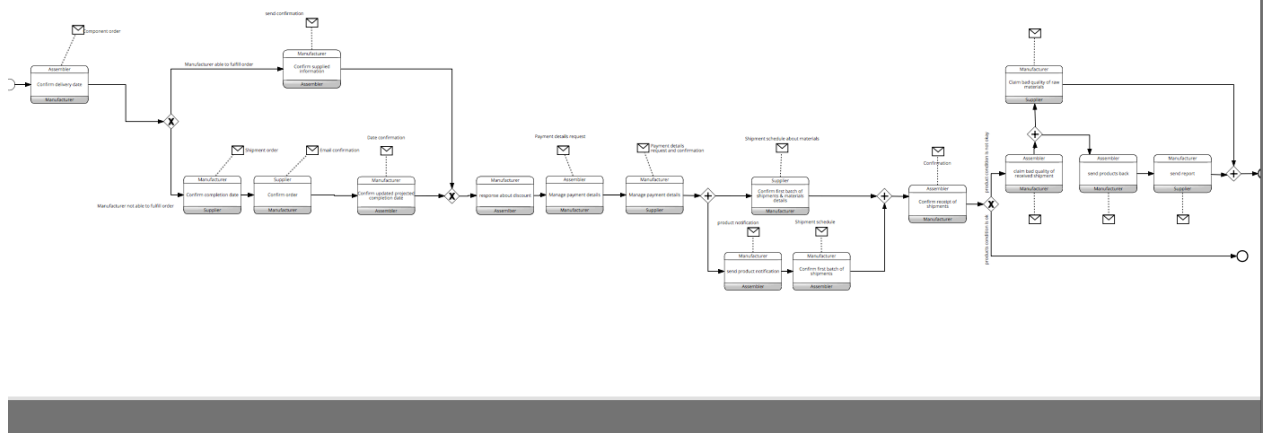
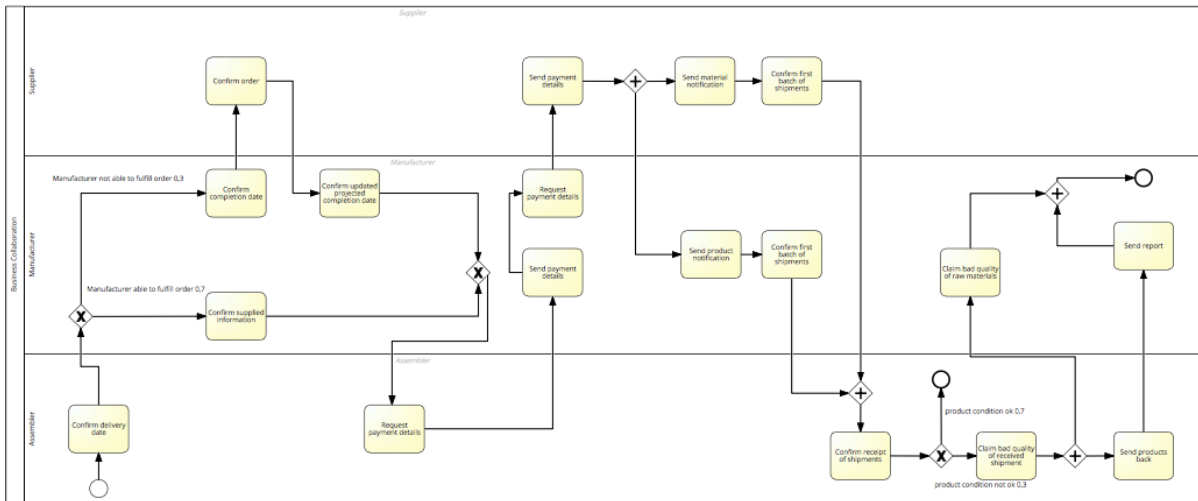
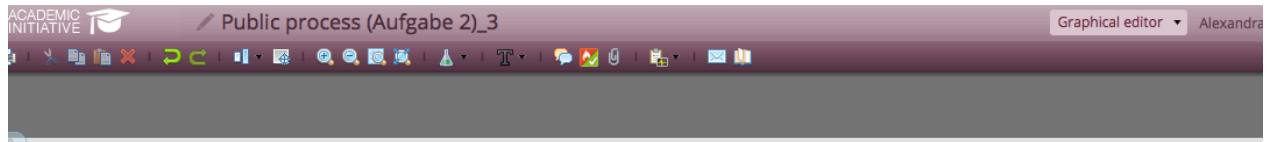


3. I added the following parallelity at the end of the process (Task “Claim bad quality of raw materials”):



The changes in my public, private and choreography model:





After receiving the public processes of my partners, I got the following results: (The formulas are visible in the Excel file):

Public:			
Ftime	65688	Sekunden	
	0.76027778	Tage	
Fcost	160900		
Freliability	0.0090362		
Influences from Assembler	Ftime (s)	Fcost (euro)	Freliability
Change 1:	163068	247900	0.00202411
Change 2:	162888	240900	0.00361448
Change 3:	594888	280900	0.00144579
Influences from Supplier	Ftime (s)	Fcost (euro)	Freliability
Change 1:	-	-	-
Change 2:	65988	162900	0.00325303
Change 3:	65808	161900	0.00542172

Private			
Ftime	432888	Sekunden	
	5.01027778	Tage	
Fcost	187900		
Freliability	0.024096521		
Influences from Assembler	Ftime (in seconds)	Fcost (euro)	Freliability
Change 1:	530268	274900	0.00539762
Change 2:	530088	267900	0.00963861
Change 3:	962088	307900	0.00385544
Influences from Supplier	Ftime (in seconds)	Fcost (euro)	Freliability
Change 1:	-	-	-
Change 2:	368388	189900	0.00867475
Change 3:	368208	188900	0.01445791